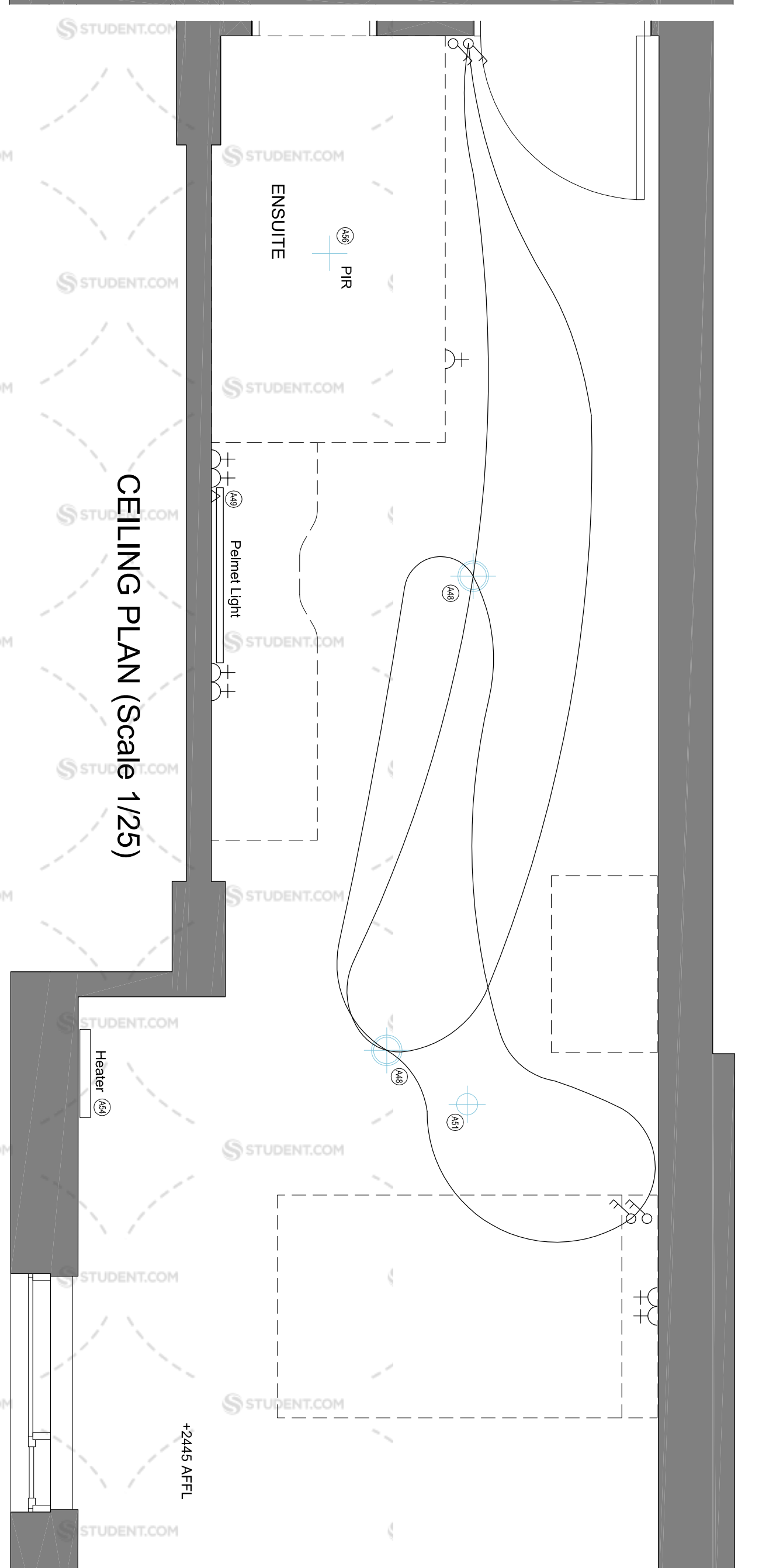
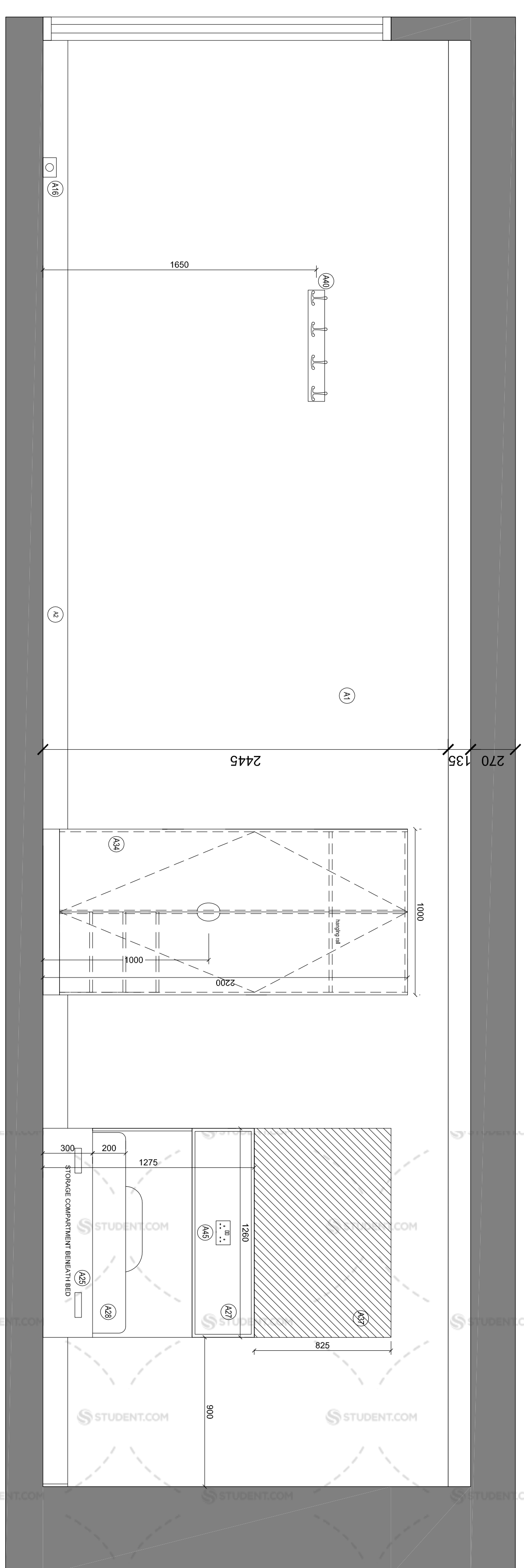


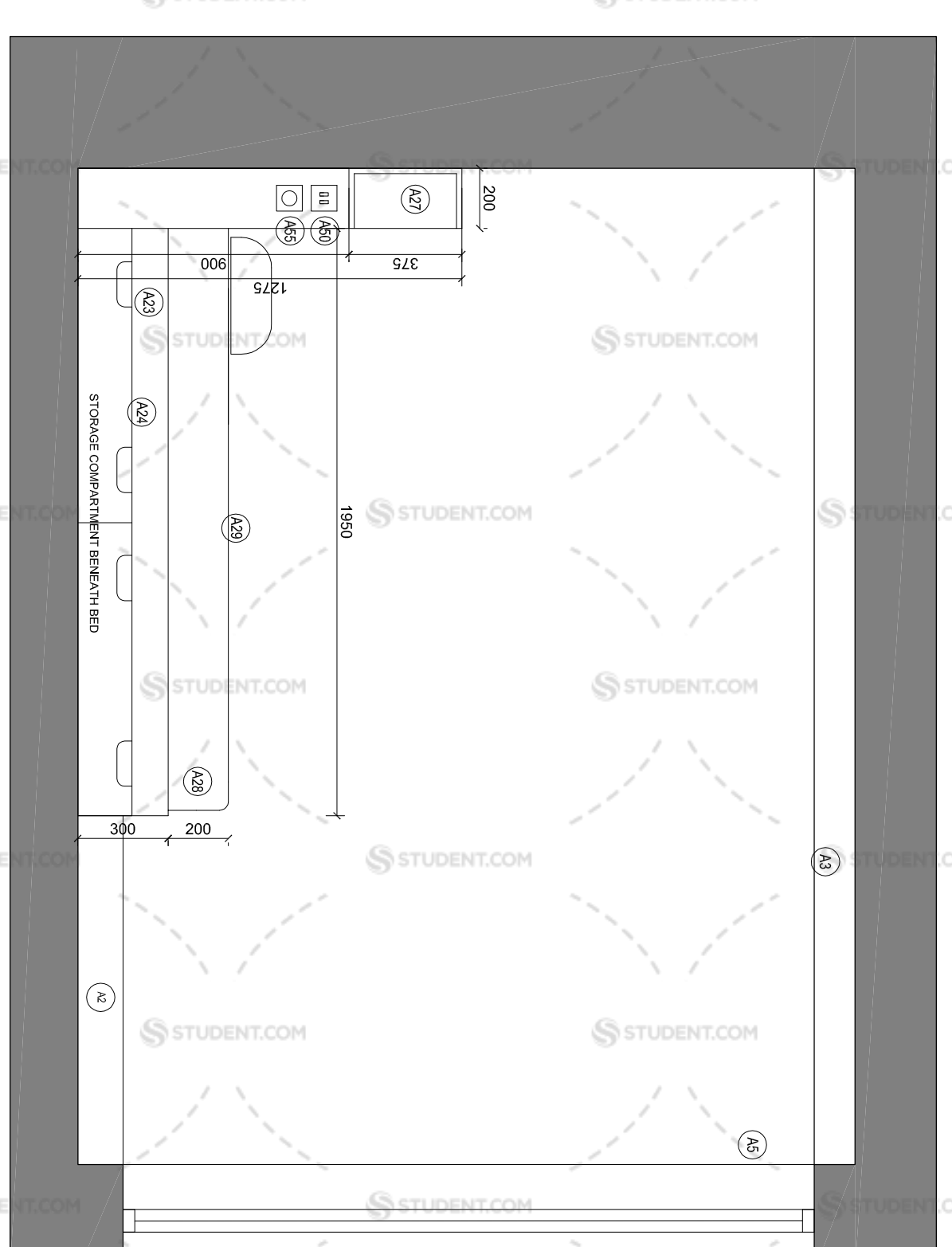
PLAN (Scale 1/25)



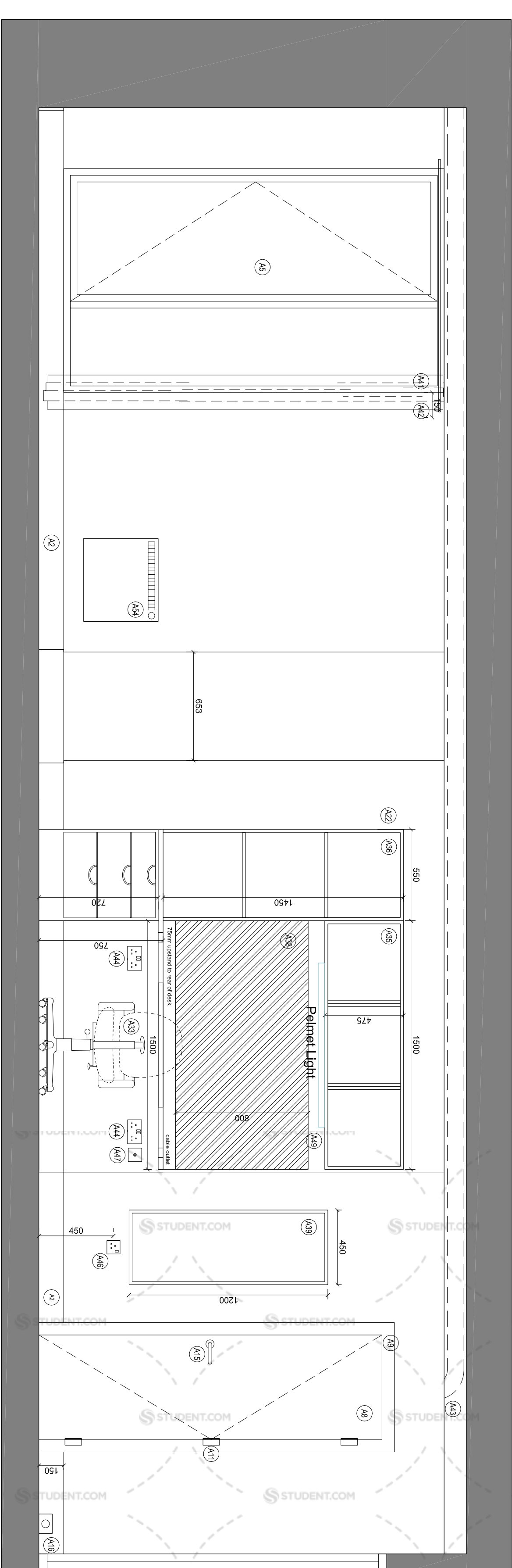
CEILING PLAN (Scale 1/25)



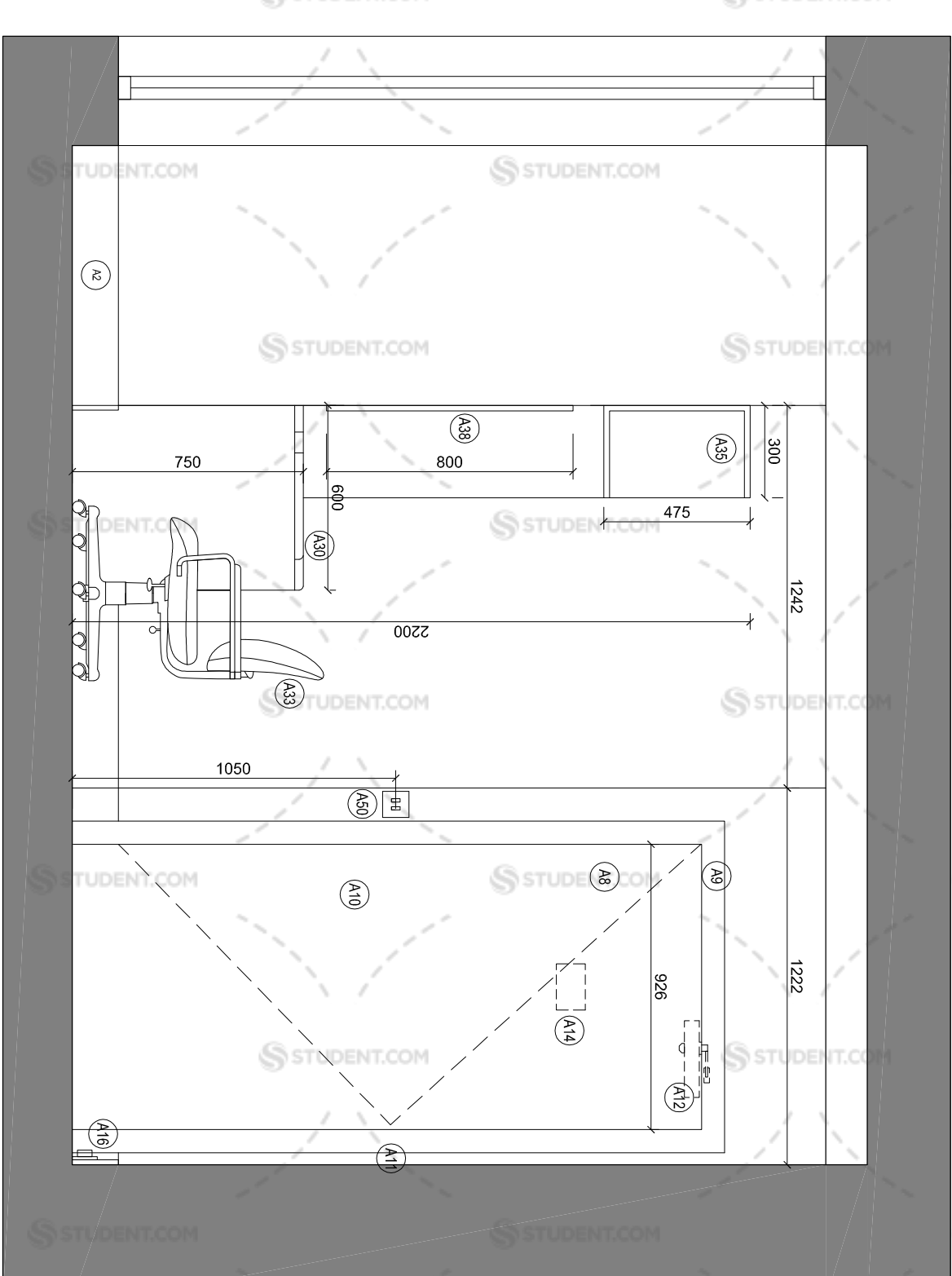
ELEVATION A



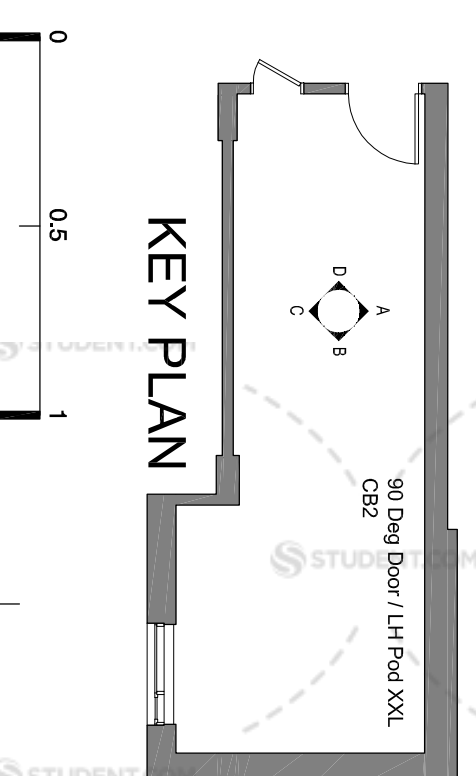
ELEVATION B



ELEVATION C



ELEVATION D



KEY PLAN

Scale of Metres - 1:20

Revision

- A 24.07.14 Drawers removed from below desk
- B 29.08.14 Wardrobe dimensions increased
- C 12.09.14 Mirror located opposite wardrobes on pod wall amended
- D 16.09.14 Vertical dimensions adjustment. Thickness wall amended
- E 03.11.14 Added Reflected Ceiling Plan - Electrics & Lightings
- F 16.09.14 Additional light switch connection shown on ceiling plan and double socket moved to middle of headboard.
- G 03.11.14 Wardrobe width amended (1000mm) and mirrored to other side of desk
- H 16.09.14 Legend amended.
- I 03.11.14 Tail Storage Unit width amended (550mm) and mirrored
- J 16.09.14 PRR added to shower pod.
- K 03.11.14 Switches/ sockets level raised to 450mm above FFL.

LEGEND

- A1 Dry-lined to receive paint finish
- A2 Skirting 150 x 15mm painted round, to receive paint finish
- A3 2 no. Recessed LED light fixtures
- A4 1 no. Recessed LED light fixture
- A5 Refer to window specification and drawings
- A6 Opening vents to tilt & turn (generally) to provide ventilation in accordance with the Project Ventilation Strategy and to provide access for safe cleaning from the inside.
- A7 Reveal Resistor with key override (subject to Client / CD/MK approval) with tapered screws
- A8 Timber veneered doorset with painted SW door frame OR Timber effect HPL faced doorset with painted steel door frame
- A9 Standard factory powered DDA Compliant FR Electronic Lock with RFID technology with additional single cylinder lock for manual override
- A10 Timber veneered doorset with painted SW door frame OR Timber effect HPL faced doorset with painted steel door frame
- A11 Room identify signage provided by Contractor as per Maland Street
- A12 Timber veneered doorset with painted SW door frame OR Timber effect HPL faced doorset with painted steel door frame
- A13 Floor mounted door stop
- A14 Room identify signage provided by Contractor as per Maland Street
- A15 Timber veneered doorset with painted SW door frame OR Timber effect HPL faced doorset with painted steel door frame
- A16 Lever latch and extended pull bar on handle for disabled use
- A17 Hinges 1.1 Pairs
- A18 Skirting mounted door stop
- A19 Backpoke built-in bedroom furniture with HPL finish to include different colours/finishes - refer to indicative furniture types. Soft Close drawers and hinges (20" hinges)
- A20
- A21
- A22
- A23 Cabin Bed 340(Q) x 126(Q) x 195(Q) (mm O.M. Frame Dimensions)
- A24 Hinged access panels with the horizontal mattress base to provide access to under bed storage
- A25 2 no. ventilation grilles within the bed panel
- A26 2 no. ventilation grilles to wall side of pod 400(Q) x 195(Q) (mm)
- A27 Bedhead unit with integrated power 1275(Q) x 126(Q) x 200(Q) (mm)
- A28 4" Extra-deep Mattress (200mm dp) with 12.5 gauge springs, rod edges and standard Chip 5 FR fabric finish
- A29 4" Spunbond Anti-Allergy Mattress Protector
- A30 28mm thick HPL, PVC Pedestal Desktop 1500 (W) x 600 (D)mm with 75 (D)mm tapered to match desk
- A31 Chrome Support Leg
- A32 Operators Chair
- A33 Wardrobe - 220 (H) x 100 (W) x 60 (D)mm n.c. 100 (D)mm plinth, Centre other with light and low beam hanging rails to one side, 3 no. shelves to the other
- A34 Wall mounted bookshelf - 1500 (W) x 475 (H) x 300 (D)mm over desk with pe task lighting
- A35 Tail Storage unit 2200 (H) x 550 (W) x 800 (D)mm at the end of the desk with no. drawers up to 220 (D)mm and 3 no. open shelves 300mm deep (the lower shelves 150mm deep)
- A36 Fabric covered onboard above bed - Wallside of bed / 1200 (H) x 1950 (D)mm Bedhead / 825 (H) x 1260 (D) mm
- A37 Fabric Pin Board 800 (H) x 1500 (W)mm above desk
- A38 Fabric mirror 200 (H) x 450 (W)mm to match bedroom furniture
- A39 4 no. fabric coat hooks mounted on wall plate to match bedroom furniture
- A40 Track to extend 150mm past window aperture or return to wall
- A41 Each pod to be individually ventilated to an external grille (1.5litres/sec)
- A42 2 no. DSSO adjacent to desk
- A43 DSSO integrated within bed head
- A44 SSSO adjacent to mirror
- A45 SSSO adjacent to desk
- A46 Lighting to achieve general luminance levels of 100lux and 300lux above the desk
- A47 Recessed LED Task lighting
- A48 2 no. 2-Way light switches (by bedroom door and at bed-head) operating ma light fittings & fabric lights and smoke detectors as detailed in I & E Specification. This item will be covered in the follow-on stage F - warrant
- A49 Pod boiling switch within the en-suite pod services riser
- A50 Gas heated hot water system (Gas boiler and CHP system)
- A51 Electric heating system to meet Building Regulations
- A52 (Soc)st technical handbook Section 1 & Section 2 as detailed in I & E Spec. This item will be covered in the follow-on stage F - warrant
- A53
- A54
- A55
- A56 1 no. PRR light controls set in ensuite ceiling

Manson Architects

Headroom Road
10 Bedford Road
Edinburgh EH4 3BL
T: 0131 226 2656
F: 0131 226 2716
E: info@mansonarchitects.co.uk
www.mansonarchitects.co.uk

Watkin Jones

Client: Aberhill
Student Residences

Drawing Title	Level A1 Plan
Issue Status	PRELIMINARY
Date	12/09/14
Scale	1:20 @ A1 Drawn MVO
Drawing No.	1975_601
Rev.	E

District Office
11 South Tyr Street
Dunfermline DT1 7NU
T: 0131 226 2818
F: 0131 226 2816
E: info@mansonarchitects.co.uk
www.mansonarchitects.co.uk
Manson Office
London

All dimensions and levels to be checked on site and the Architect is held harmless of any discrepancies prior to the commencement of work. Approved dimensions are to be shown on the contract. All dimensions are to be taken from the finished face of the work unless otherwise stated. All dimensions are to be taken from the finished face of the work unless otherwise stated.